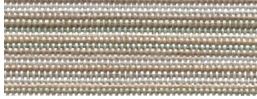
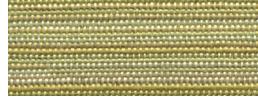


Guilford of Maine • Metro

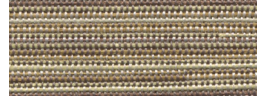
Gr B



Cement (F3077-031)



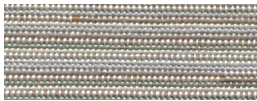
Central Park (F3077-050)



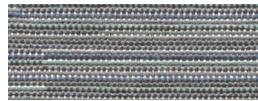
Downtown (F3077-020)



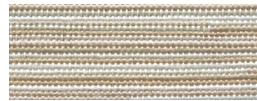
Goldust (F3077-010)



Limestone (F3077-040)



Skyscraper (F3077-022)



Storefront (F3077-030)



Subway (F3077-024)

Specifications

Content

89% pre-consumer recycled content, 11% post-consumer recycled content

Repeat

H: 0
V: 0

Width

66 in.

Weight

10.7 oz.

Cutting Direction

NR - Non-railroaded

Cleaning Code

W-S: Clean with water based cleaning agents, foam or pure, water free solvents. Vacuuming or light brushing is recommended to prevent dust and soil buildup.

Performance

- Greenguard Certification : N/A
- Colorfastness Wet : 3
- Colorfastness Dry : 4
- Passes Cal-117-2013
- ASTM E 84 Unadhered, as stocked : ASTM E84 Class I or A
- Tensile Strength Weft : N/A
- Tensile Strength Warp : N/A
- Seam Slippage Weft : N/A
- Seam Slippage Warp : N/A
- Green Certification: Terratex and Carbon Neutral
- UL Recognized

The colors on this card are digital representations. Please refer to an actual sample before finalizing your selection.